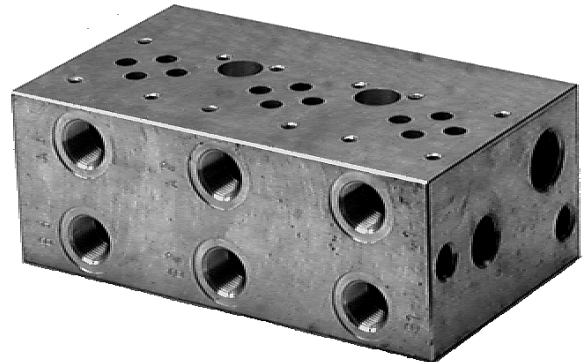


- For in-line mounting of hydraulic valves
- Parallel connection of ports P and T
- 1 ... 10 sections possible
- Installation dimensions to ISO 4401-03-02-0-94 and DIN 24 340-A6
- Mounting Accessories



Ordering Code

PD06 -AL

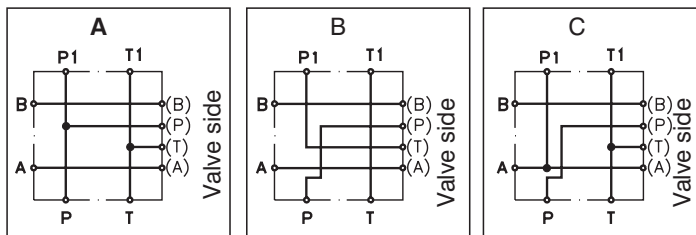
In-line connecting platte

Nominal size

Material - aluminium

Connection

Functional symbols



Number of section	
1	1 section
2	2 sections
3	3 sections
4	4 sections
5	5 sections
6	6 sections

Survey of Types

Type	Ordering number	Weight
PD06A1-AL	760-0031	1.572 lbs (0.713 kg)
PD06B1-AL	760-0037	1.574 lbs (0.714 kg)
PD06C1-AL	760-0038	1.568 lbs (0.711 kg)
PD06A2-AL	760-0032	3.109 lbs (1.410 kg)
PD06A3-AL	760-0033	4.652 lbs (2.110 kg)
PD06A4-AL	760-0034	6.217 lbs (2.820 kg)
PD06A5-AL	760-0035	7.771 lbs (3.525 kg)
PD06A6-AL	760-0036	9.326 lbs (4.230 kg)

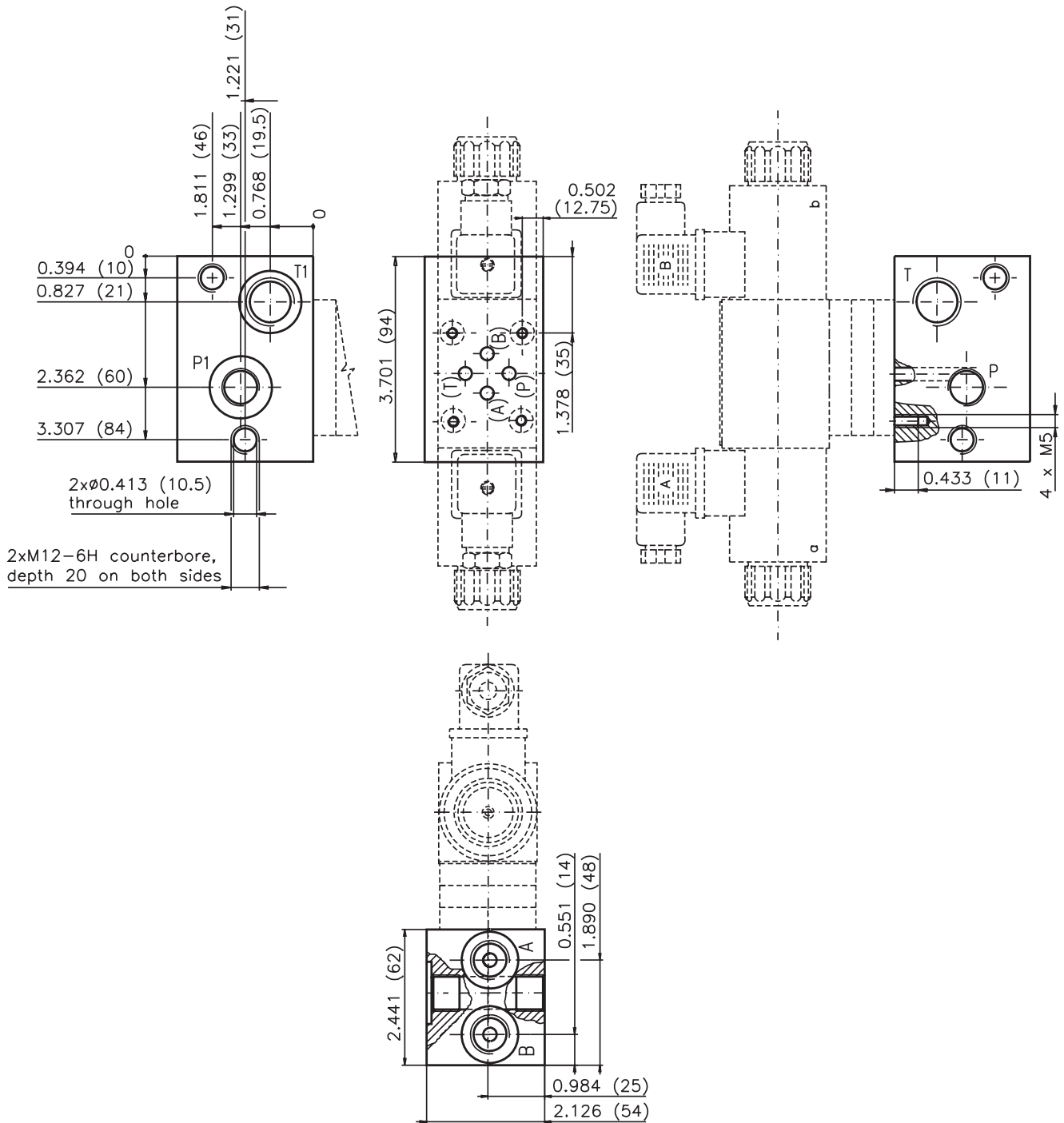
FOR PREFERRED TYPES SEE BOLD TYPING IN ORDERING CODE AND TABLE OF SURVEY OF TYPES

Valve Dimensions

Dimensions in inches and millimeters (in brackets)

Plates with 1 section

Plates with 1, 2, 3 and 4 sections enable combinations up to 10 sections



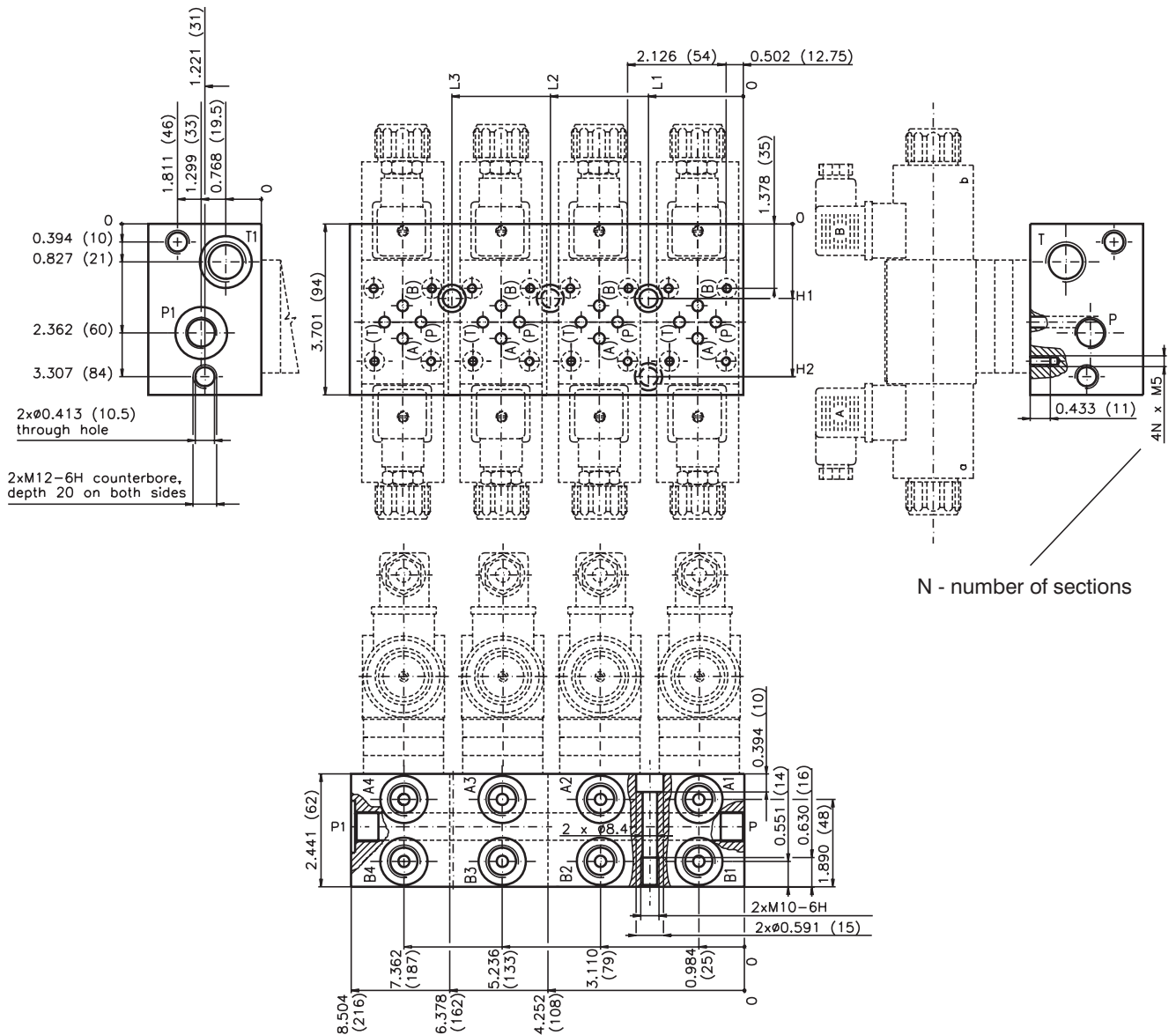
Port	A, B	P	T	P1	T1
Thread	G3/8	G3/8	G1/2	G3/8	G1/2
Depth of thread	0.512 (13)	0.512 (13)	0.670 (17)	0.512 (13)	0.670 (17)
Counterbore	Ø0.945 (24)	-	-	Ø1.118-0.008 (28.4-0.2)	Ø1.118-0.008 (28.4-0.2)
Depth of counterbore	0.020 (0.5)	-	-	0.083-0.004 (2.1-0.1)	0.083-0.004 (2.1-0.1)
O-Ring [mm]	-	-	-	23.4 x 2.62	23.4 x 2.62

Valve Dimensions

Dimensions in inches and millimeters (in brackets)

Plates with 2 ... 4 sections

Plates with 1, 2, 3 and 4 sections enable combinations up to 10 sections



N - number of sections

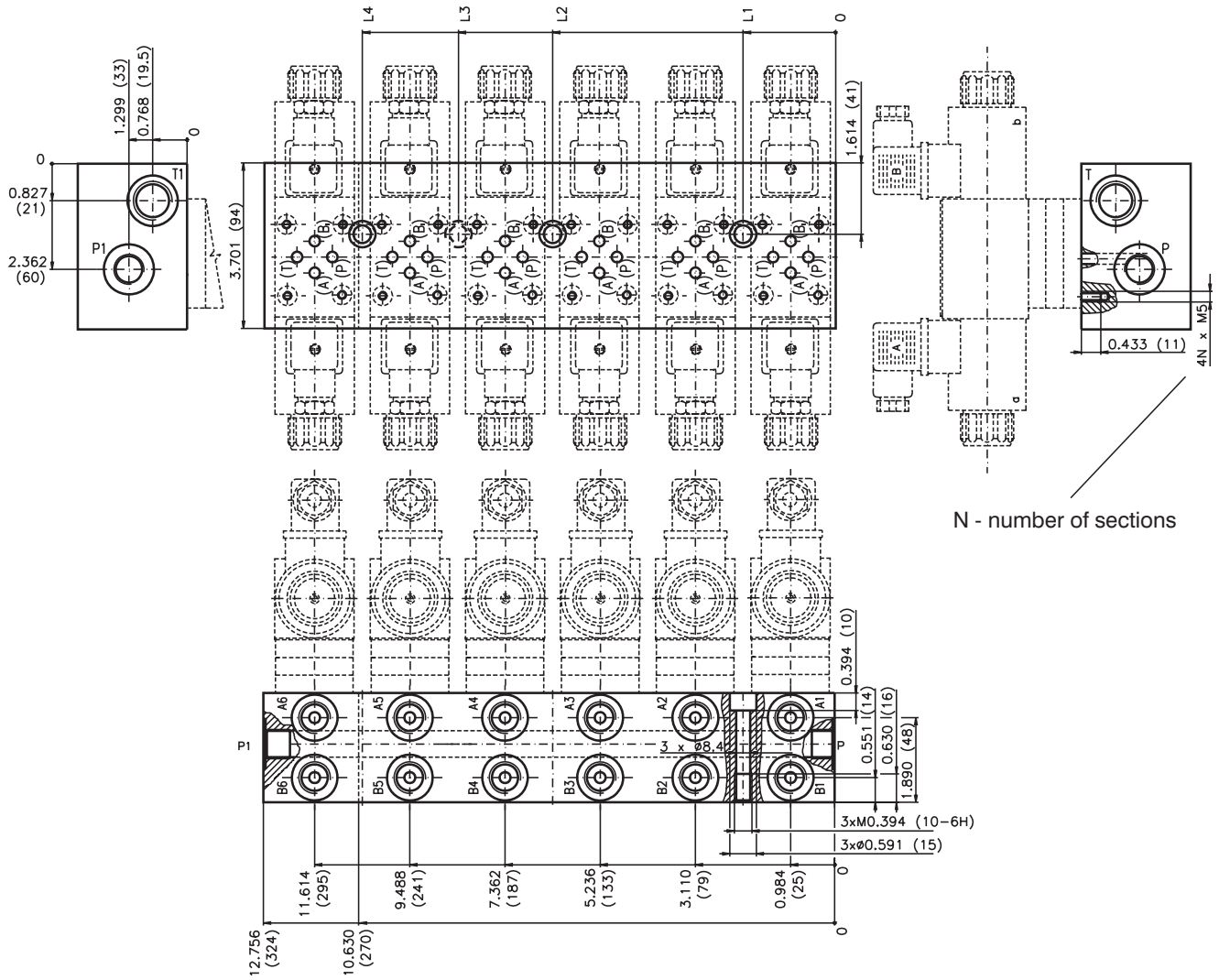
Number of sections	L1	L2	L3	H1	H2
2	2.047 (52)	-	-	1.614 (41)	3.307 (84)
3	2.047 (52)	4.173 (106)	-	1.614 (41)	-
4	2.047 (52)	-	6.300 (160)	1.614 (41)	-
Port	A1...A4, B1...B4	P	P1	T	T1
Thread	G3/8	G3/8	G3/8	G1/2	G1/2
Depth of thread	0.512 (13)	0.512 (13)	0.512 (13)	0.670 (17)	0.670 (17)
Counterbore	Ø0.945 (24)	-	Ø1.118-0.008 (28.4-0.2)	-	Ø1.118-0.008 (28.4-0.2)
Depth of counterbore	0.020 (0.5)	-	0.083-0.004 (2.1-0.1)	-	0.083-0.004 (2.1-0.1)
O-Ring [mm]	-	-	23.4 x 2.62	-	23.4 x 2.62

Valve Dimensions

Dimensions in inches and millimeters (in brackets)

Plates with 5 ... 6 sections

Plates with 5 and 6 do not enable any other combinations



N - number of sections

Number of sections	L1	L2	L3	L4
5	2.047 (52)	6.300 (160)	8.425 (214)	-
6	2.047 (52)	6.300 (160)	-	10.551 (268)

Port	A1...A6, B1...B6	P, P1	T, T1
Thread	G3/8	G3/8	G1/2
Depth of thread	0.512 (13)	0.512 (13)	0.670 (17)
Counterbore	Ø0.945 (24)	Ø1.108 (28)	Ø1.108 (28)
Depth of counterbore	0.020 (0.5)	0.020 (0.5)	0.020 (0.5)

Mounting Accessories

Set of stud bolts, nuts and washers for connection of PD06 plates

Ordering Code

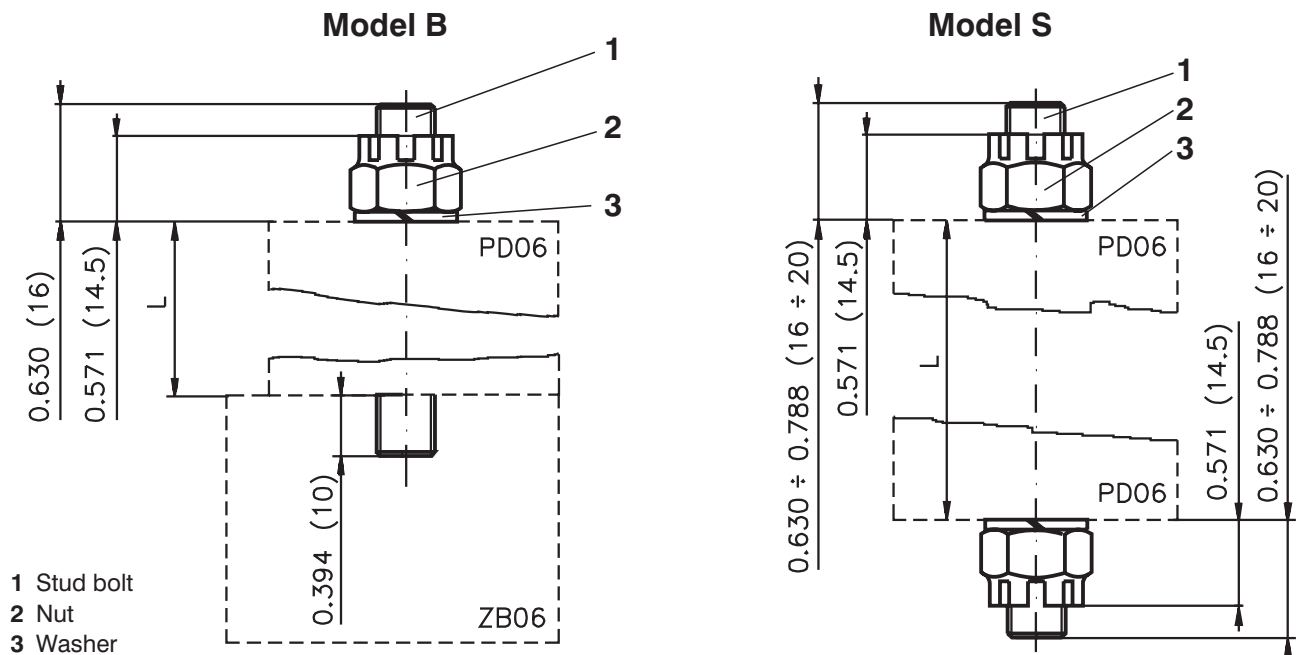
<p style="text-align: center;">MP <input style="width: 20px;" type="text"/> <input style="width: 20px;" type="text"/> - <input style="width: 20px;" type="text"/></p> <div style="border: 1px solid black; padding: 5px; margin-bottom: 10px; width: fit-content;"> Mounting accesories </div> <div style="border: 1px solid black; padding: 5px;"> <p>Model</p> <ul style="list-style-type: none"> - for connection of PD plates with ZB06 block B - for separate connection of PD06 plates S </div>	<div style="border: 1px solid black; padding: 5px; margin-bottom: 10px; width: fit-content;"> 1 ... 10 Number of section </div> <div style="border: 1px solid black; padding: 5px; width: fit-content;"> M10 Thread </div>
--	--

Survey of Types

Number of sections	Total block length - L [mm]	Model B		Model S	
		Type	Ordering number	Type	Ordering number
1	2.126 (54)	MPB10-1	760-0050	-	-
2	4.252 (108)	MPB10-2	760-0051	MPS10-2	760-0060
3	6.378 (162)	MPB10-3	760-0052	MPS10-3	760-0061
4	8.504 (216)	MPB10-4	760-0053	MPS10-4	760-0062
5	10.630 (270)	MPB10-5	760-0054	MPS10-5	760-0063
6	12.760 (324)	MPB10-6	760-0055	MPS10-6	760-0064
7	14.882 (378)	MPB10-7	760-0056	MPS10-7	760-0065
8	17.010 (432)	MPB10-8	760-0057	MPS10-8	760-0066
9	19.134 (486)	-	-	MPS10-9	760-0067
10	21.260 (540)	-	-	MPS10-10	760-0068

Dimensions

Dimensions in inches and millimeters (in brackets)



Caution

- The packing foil is recyclable.
- O-Ring supplied with delivery.
- The technical information regarding the product presented in this catalogue is for descriptive purposes only. It should not be construed in any case as a guaranteed representation of the product properties in the sense of the law.

ARGO-HYTOS a. s. CZ - 543 15 Vrchlaví
Tel.: +420-499-403111, Fax: +420-499-403421
E-mail: sales.cz@argo-hytos.com
www.argo-hytos.com